



Finish Line Timer

Quickstart Instructions

We thank you for purchasing the eTekGadget SmartLine Finish Line Timer System. The SmartLine Timer Setup Program is supplied with the timer so that operating parameters may be easily set or changed to your preference without having to know the commands.

First Setup SmartLine Finish Line hardware

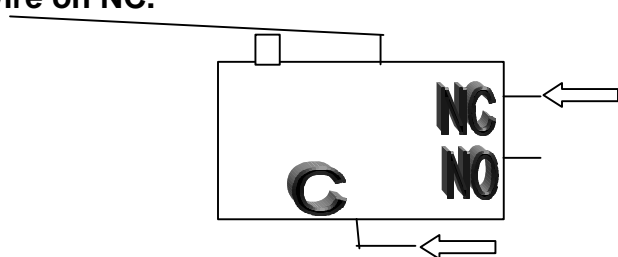
If you have a SmartLine Space Derby Timer, follow the instructions in the Space Derby Manual. You may use the LINESETUP2 program on the Space Derby Timer to verify the communications and modify any of the parameters such as the automatic reset timing.

Install the SmartLine Pinewood Derby Finish Line Timer using the following steps. Additional instructions are found in the SmartLine Installation Manual if you are drilling your own holes.

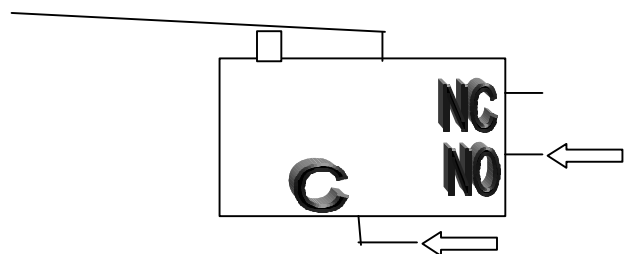
1. Peel off the paper on the double-sided tape and stick the Plexiglas panel to the frame making sure to line up the screw holes. Attach the panel on the opposite side from the SmartLine label with the displays facing the same direction as the label. The double-sided tape gives the panel stability. If you are planning to detach the Plexiglas panel from the frame for uses such as the Highboy frame, you may not want to peel the paper off the double-sided tape. Attach the display to the frame legs from the back with the screws that are taped onto the legs or into the panel screw holes.
2. Anchor the SmartLine Finish Line Timer to the track using the method that is appropriate for the track you have.
 - Method 1: The Piantedosi type sensor bar has holes positioned where the sensors are installed. We supply a wooden sensor bar with your timer that is mounted onto the bottom of the timer feet. The sensors are pre-mounted in the sensor bar that we supply. Piantedosi will supply an aluminum bar if you have requested it. If you need to remove the sensors from the bar we supplied, be sure to push them out from the topside with the back of a $\frac{1}{4}$ or $\frac{3}{16}$ inch drill. Do not pull them out from the back or push on the center black part.
 - Method 2: The BestTrack type sensor bar is an aluminum bar with foam pads installed to hold the sensors in place. It is mounted onto the bottom of the timer feet when shipped. The sensors are pre-mounted on the sensor bar. We supply nuts and bolts to secure the timer onto the BestTrack track.
 - Method 3: See "Special Note For Your Bar Type Mount".

3. Plug the display connector into the outside leg of the timer.
 IMPORTANT: Be careful not to jam the connector in. It is a keyed connector that fits in one direction. Match up the RED marks on the plug and connector.
4. Plug the power supply into the mating connector on the SmartLine timer unit. Do not plug it into the wall socket yet.
5. Plug the 9-pin RS-232 interface cable from the SmartLine timer into any COM port on your PC. You may also use an RS-232 to USB conversion cable to use a USB connector on your computer.
6. Plug the Reset/Start Switch cable into the leg of the timer. You may mount the Start Switch onto your track or use the timer without it. If you do decide to mount the start switch, please follow the wiring instructions carefully.

WIRING INSTRUCTIONS: The supplied sensor switch has three terminals marked C(Common), NC(Normally Closed) and NO(Normally Open). The preferred method is to have the switch pressed before the race and un-pressed when the race starts. This method requires the use of the C and NC contacts. **The timer is shipped with the green wire on C and the white wire on NC.**



If you want the switch to be un-pressed before the race and pressed when the race starts, then the push-on terminal needs to be on the NO contact as indicated below.



7. Peel the protective paper off the face of the displays.
8. Lastly, using the AC adapter, plug the SmartLine Finish Line timer into a source of power (wall socket).

Install and Run the SmartLine Setup Program

We supply the SmartLine Setup Program (LINESETUP2.EXE) on a CD to establish the initial communication and also for updating any settings that you may wish to change.

You may use the LINESETUP2 program directly from the CD or copy it to any directory of your choice. You only need the one file, LINESETUP2.EXE, to run this program.

Before you start the LINESETUP2.EXE program make sure that the SmartLine Finish Line Timer is plugged into the computer and turned on.

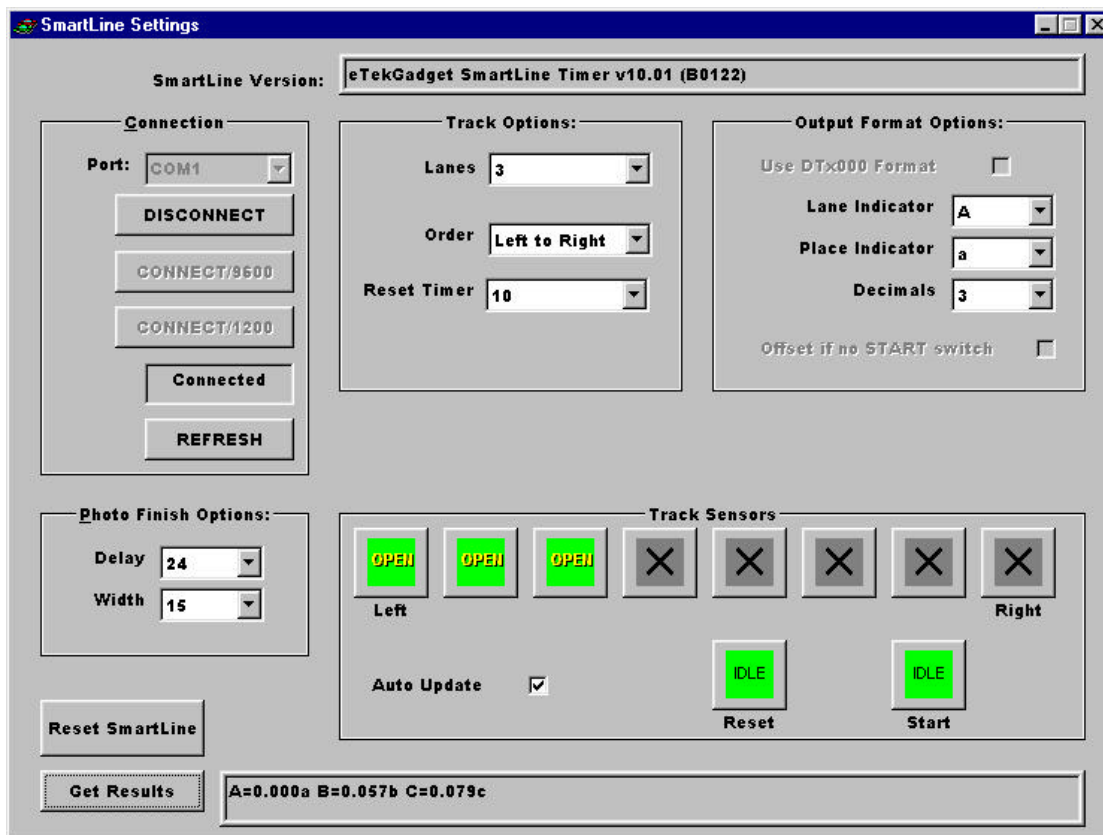
Make sure that you do **NOT** have any other programs running that use the same COM port, such as a race manager program.

To start the SmartLine Setup Program, simply double-click on the LINESETUP2.EXE program name.

Select the COM port you will be using for communication in the Connection box.

Click the "CONNECT/AUTO" button. The "CONNECT" button is currently displaying "DISCONNECT" in the picture below because it has already been pressed and the status is Connected.

The SmartLine Version should appear at the top of the box. The Track Sensors area will show the state of the sensors and switches. Check the Auto Update checkbox to obtain continuous readings of the sensors and switches.



This is the display as it appears when there are 4 lanes and communication has been established successfully. Waving a hand under the sensors trigger the timer and the 'Get Results' button can be pressed in order to see the result string from the timer.

In the new version, if you see "forced connection" instead of the "version" the timer is not connected properly. Use the explicit "CONNECT/" buttons to connect to the timer and recycle power.

Setup the SmartLine Timer for use with various race management software packages.

RaceTender –

Select the SmartLine Timer in the RaceTender's Race Setup Track Configuration screen. The RaceTender Software will send the appropriate commands to setup the SmartLine Timer. You may set the photo finish delay times at any time during the race.

GrandPrix Race Manager –

Select the SmartLine Timer in the GrandPrix Race Manager's Hardware Setup Options screen. Select the COM port that will be used.

You may test the communications at this point by pressing the Start Test button. The GrandPrix Race Manager will send the appropriate commands to the SmartLine Timer to get the readings from the next race. You may trigger the sensors, simulating a race, and the results will be displayed. You may also send individual commands to the timer. When you select the SmartLine Timer in the Hardware Setup screen, a new tab will appear for setting the Photo Finish values. You may set the photo finish delay times at any time during the race. This option is available only in the GrandPrix Race Manager V5.0.1 or newer upgrade.

DerbyMaster, RaceView and GrandPrix Version 4.0 or less –

We will provide a special version of the LineSetup program if you have one of these race management packages. We will assist you in setting the communication mode.

SmartLine Setup Program Special Version –

In the special version of the LineSetup program you will be allowed to set the timer into "DTX" mode for communication with these programs. In the 'Output Format Options' box set the checkbox to use DTX000 mode. The SmartLine Timer will automatically restart in the DTX000 mode. Exit (Close) the LINESETUP program as soon as you have set the checkbox.

In the Race Management Program do the following –

Select DTX000 mode in the configuration of the race management program that you are using.

eTekGadget
36 Matuk Drive
Hyde Park, NY 12538
(845)-229-5189
www.eTekGadget.com